



ROTARY SCREW AIR COMPRESSORS

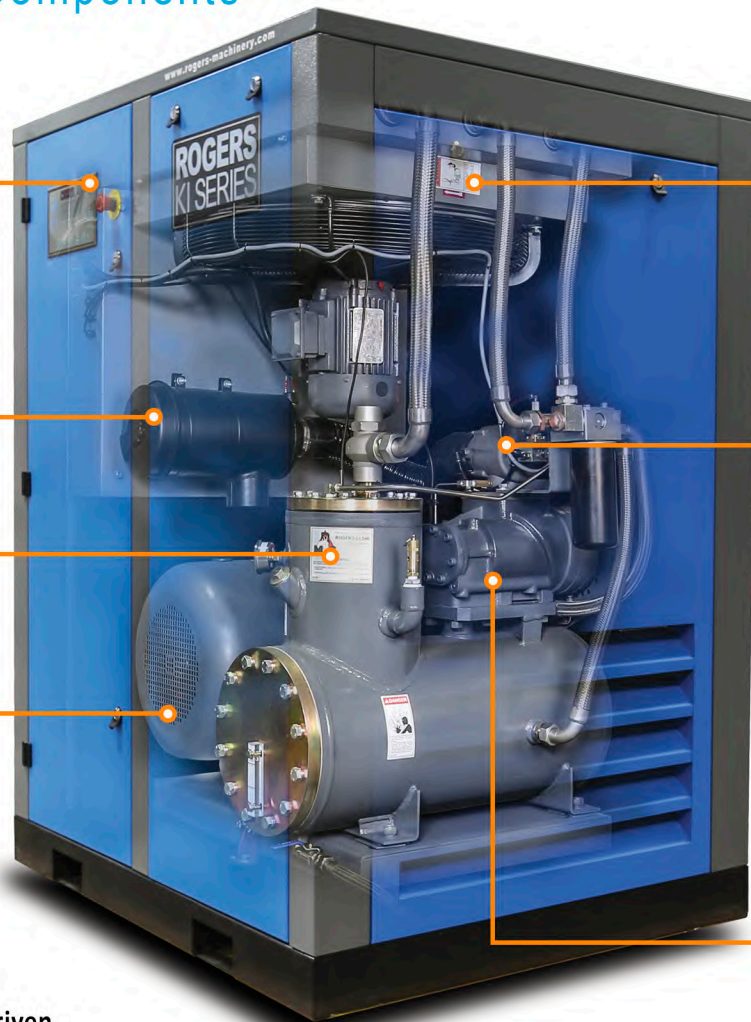
KI/KIV Series

Fixed or Variable Speed ■ Lubricant-Injected ■ Single-Stage
10-100 HP ■ Air-Cooled ■ 100-200 PSI



ROGERS® KI/KIV Series

The Compressor Components



Compressor Controller
Unit control and system status at your fingertips.

Heat Exchangers
Cools lubricant and compressed air.

Inlet Filter / Silencer
Low-pressure drop element.

Inlet Control Valve
Engineered for reliable, efficient capacity control with load/unload on all units and load/unload modulation on 60-100 HP.

Air/ Lubricant Separator
High efficiency, reliable separation.

Motor
Energy efficient, NEMA frame main motors.

V-Belt Driven
From 10 to 50 HP

Airend
Designed and built to last. Energy efficient rotor profile.

Fixed or Variable Speed, You Decide!

Easy-to-use microprocessor-based control panels with easy-to-read text screen and indicators.



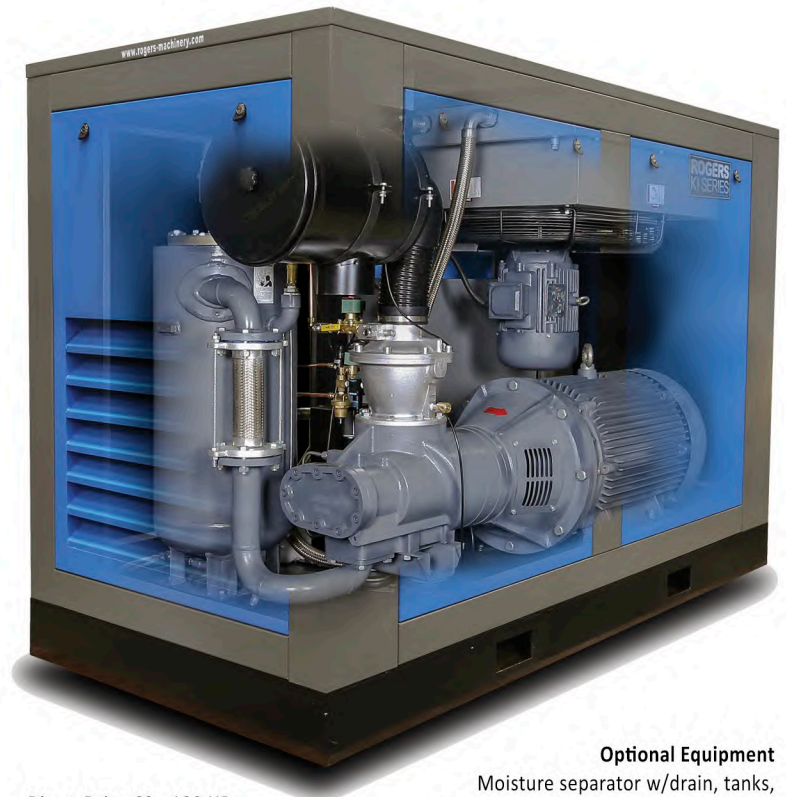
KIV Control Panel
(included on some KI models)



KI Control Panel

Standard Equipment and Design Features

- High-efficiency, precision machined 5:6 rotor profile
- Vertical flow cooling air (10 hp horizontal)
- Automatic temperature regulation
- Load/unload (10-50 HP) and load/unload or modulation control (60-100 HP)
- Lubricant-flooded rotary screw compressor
- High-efficiency 5:6 rotor profile
- Triple-lip shaft seal
- Air-cooled lubricant cooler with automatic temperature control
- Belt driven (10-50 HP) or Direct drive (60-100 HP)
- OSHA-compliant belt or coupling guard
- Multi-stage, high-efficiency air-lubricant separation system produces low oil-carryover
- Spin-on type lubricant filter
- Motor – TEFC, NEMA frame
- Inlet air filter/silencer
- ASME pressure relief valve
- Minimum pressure discharge air check valve
- Lubricant level sight glass
- High-temperature shutdown switch
- UL listed control panel
- Microprocessor-based control complete with LCD display
- Remote start capability
- Multiple-compressor control sequencing capability
- E-stop button for immediate manual safety shutdown of compressor
- Standard operating pressures 100-200 PSIG
- Compact footprint
- Low sound, 76 dB(A) or less
- Powder-coated, fabricated steel base and enclosure with sound-attenuating panels
- Air-cooled after cooler
- RS-485 Communication
- Dry contacts for remote monitoring on KI models
- KI: Wye-delta, reduced voltage starter (fixed speed 10 HP is magnetic X-line.)
- KIV: Variable Speed Drive, in NEMA 1 enclosure, mounted, wired, and tested



Direct Drive 60 - 100 HP

Optional Equipment
Moisture separator w/drain, tanks, filters, dryers and oil-water separators.



ROGERS® delivers ecologically friendly, energy-efficient air compressor and vacuum pump designs.

The Tank Mounted Package Components

Easy Installation

The compact size of the integrated tank and dryer reduces floor space requirements, and the pre-installed piping saves on installation costs.

Aluminum Piping

Aluminum piping eliminates the need to replace hoses and gives you the longest-lasting installation possible.

Tank

120-gallon, 200 psi rated tank with drain, pressure gauge, and pressure relief valve.



Dryer

Mounted, refrigerated dryer to reduce water in the compressed air system. KIV-15 through 30 are available with cycling dryer to maximize energy efficiency when paired with the variable speed compressor.

Filter

Integrated, high-efficiency, coalescing filter (not shown) removes residual compressor oil before reaching the dryer and downstream components.

Distributed by:

K Series

ROGERS Machinery Company

3509 Galvin Rd.

Centralia, WA 98331

Phone: 360.736.9356



ROGERS® K Series is designed
and built in the USA.

 rogers-machinery.com 



Please recycle after using.