

SI.No.	DESCRIPTION	Qty.	DRAWING No.	Rev.	REMARKS
MODEL :	EG 30, EG 37, EG 45 (USA)				
MATERIAL :	---				
WEIGHT :	---				
2016	NAME	DATE			
CAD	KH	14/12/16			
CHECKED	RMP	07/02/16			
APPROVED	K/V	07/02/16			
REF.DRG.No.	NEXT ASSY.				
SCALE	DRG.No.	01	53	16	5
NTS	DRG.SHEET	1	OF	4	REVISION
					IR 10 0

REV. NO.	ECO.No.	DATE	DESCRIPTION	CHKD. BY	ALT. BY

NOTE:

- INDICATES DUCTING DIMENSION
- ALL DIMENSIONS WITHOUT TOLERANCE ARE FOR REFERENCE ONLY
- COOLING AIR FLOW FOR DUCTING 459 lcfm.
- MINIMUM DISTANCE REQUIRED AROUND THE COMPRESSOR IS 3.3ft AT ALL SIDES AND 6.6ft AT TOP (INSTALLATION REQUIREMENT)
- () INDICATES FORK LIFT/PALLET TRUCK DIMENSIONS
- ALL DIMENSIONS ARE IN INCHES
- FAN IDENTIFICATION DETAILS
- WHEN VIEWED FROM FRONT SIDE (CONTROL PANEL SIDE)
 - LEFT HAND SIDE FAN IS "FAN 1"
 - RIGHT HAND SIDE FAN IS "FAN 2"
- ITEM No. 14 APPLICABLE FOR VFD MODEL ONLY

ELGI ELGI EQUIPMENTS LTD.,
COIMBATORE - INDIA

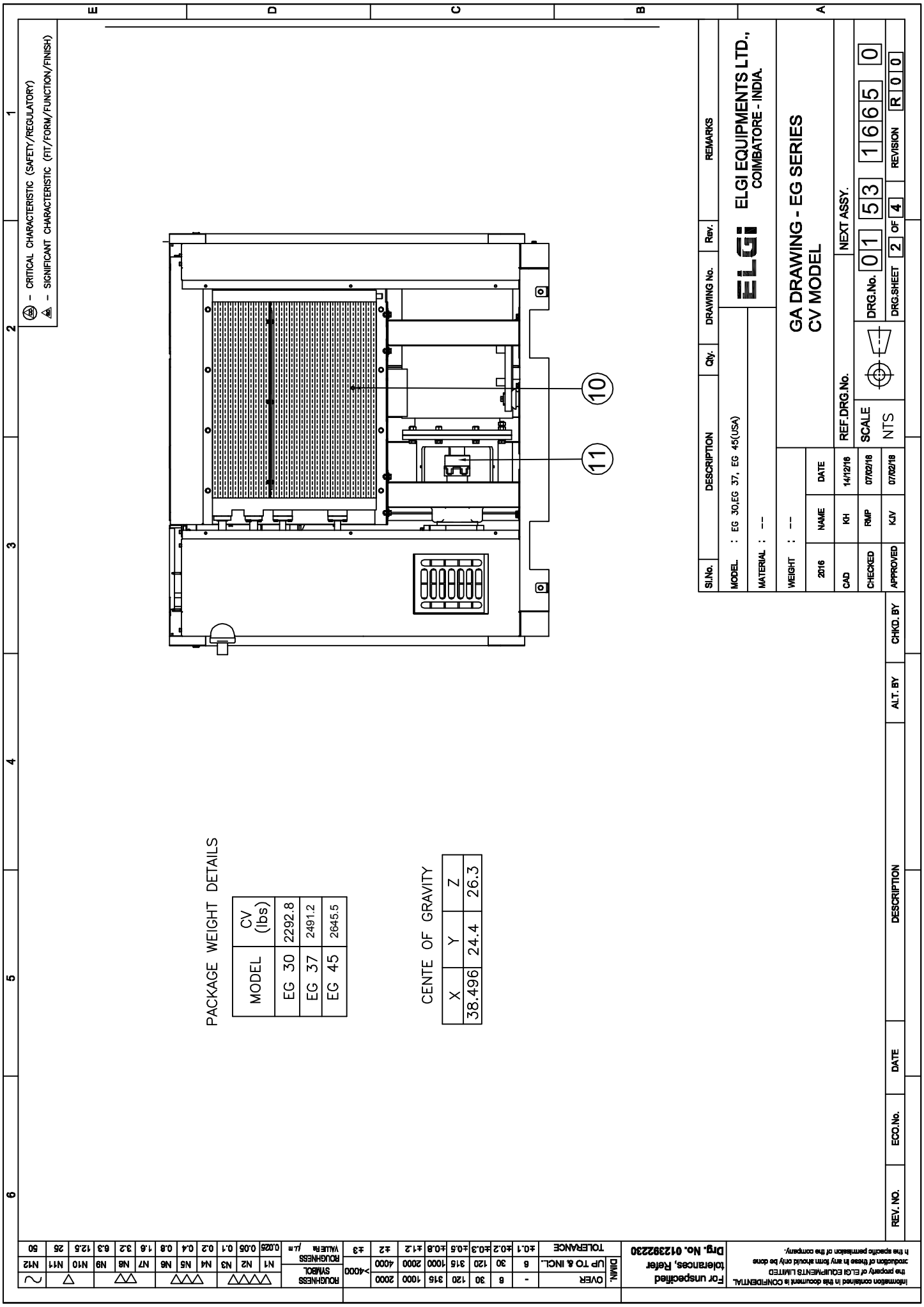
**GA DRAWING - EG SERIES
CV MODEL**

DIM'TL	OVER	UP TO & INCL.	TOLERANCE
8	30	120	±0.1
30	120	315	±0.2
315	1000	1000	±0.3
1000	2000	2000	±0.5
2000	4000	4000	±0.8
4000			±1.2
			±2
			±3
			±4

ROUGHNESS	SYMBOL	ROUGHNESS	VALUE IN μm
▽	N1	0.025	0.05
▽	N2	0.05	0.1
▽	N3	0.1	0.2
▽	N4	0.2	0.4
▽	N5	0.4	0.8
▽	N6	0.8	1.6
▽	N7	1.6	3.2
▽	N8	3.2	6.3
▽	N9	6.3	12.5
▽	N10	12.5	25
▽	N11	25	50
▽	N12	50	100

S.No	DESCRIPTION	QTY
1	COOLING FAN - MOTOR*	1
2	MOISTURE SEPARATOR	1
3	AIR-OIL SEPARATOR	1
4	DRIVE COUPLING	1
5	OIL COOLER AND AFTER COOLER	1
6	CONTROL PANEL ASSEMBLY	1
7	COOLING FAN	2
8	MINIMUM PRESSURE VALVE	1
9	INTAKE VALVE	1
10	AIR FILTER	1
11	OIL FILTER	1
12	AIR-OIL SEPARATOR TANK	1
13	AREND	1
14	MOTOR	1

⊕ - CRITICAL CHARACTERISTIC (SAFETY/REGULATORY)
⊕ - SIGNIFICANT CHARACTERISTIC (FIT/FORM/FUNCTION/FINISH)



⊕ - CRITICAL CHARACTERISTIC (SAFETY/REGULATORY)
 ⊖ - SIGNIFICANT CHARACTERISTIC (FIT/FORM/FUNCTION/FINISH)

PACKAGE WEIGHT DETAILS

MODEL	CV (lbs)
EG 30	2292.8
EG 37	2491.2
EG 45	2645.5

CENTE OF GRAVITY

X	Y	Z
38.496	24.4	26.3

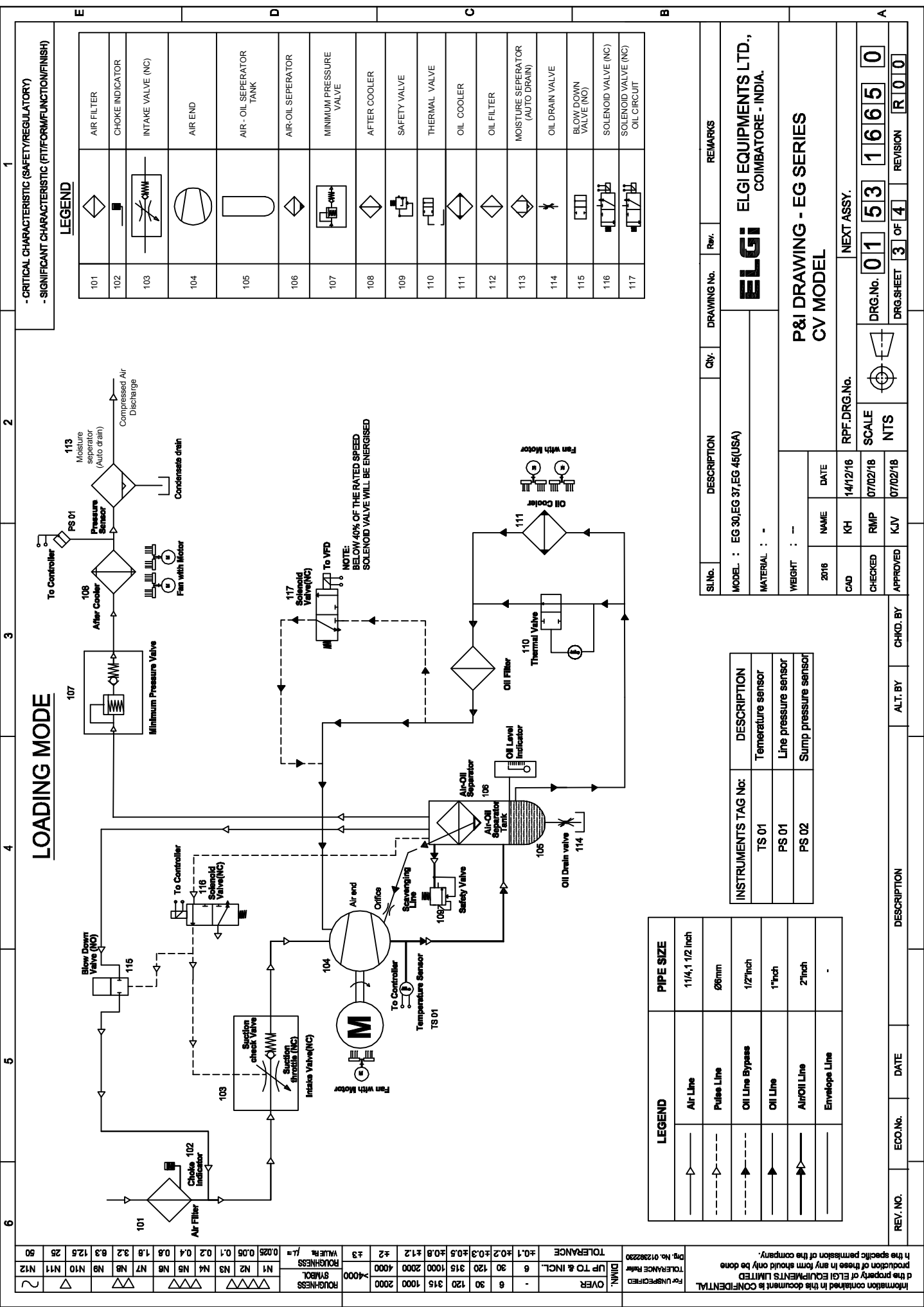
DIMAL	OVER	TOLERANCE	ROUGHNESS	
			SYMBOL	VALUE R _a μm
±0.1	±0.2	±0.3	±0.5	±0.8
±0.2	±0.3	±0.5	±0.8	±1.2
±0.3	±0.5	±0.8	±1.2	±2
±0.5	±0.8	±1.2	±2	±3
±0.8	±1.2	±2	±3	>4000
±1.2	±2	±3		
±2				
±3				

Information contained in this document is CONFIDENTIAL the property of ELGI EQUIPMENTS LIMITED production of these in any form should only be done in the specific permission of the company.

For unspecified Tolerances, Refer Drg. No. 012392230

S.No.	DESCRIPTION	Qty.	DRAWING No.	Rev.	REMARKS
	MODEL : EG 30,EG 37, EG 45(USA)				ELGI ELGI EQUIPMENTS LTD., COIMBATORE - INDIA.
	MATERIAL : --				
	WEIGHT : --				
2016	NAME	DATE	GA DRAWING - EG SERIES CV MODEL		
CAD	KH	14/12/16			
CHECKED	RMP	07/02/16	REF.DRG.No.	NEXT ASSY.	
APPROVED	KJV	07/02/16	SCALE	DRG.No. 0153116150	
			NTS	DRG.SHEET	2 OF 4
				REVISION	IR 100

REV. NO.	ECO.No.	DATE	DESCRIPTION	CHKD. BY	ALT. BY



LOADING MODE

6	5	4	3	2	1
---	---	---	---	---	---

LEGEND

101		AIR FILTER
102		CHOKE INDICATOR
103		INTAKE VALVE (NC)
104		AIR END
105		AIR - OIL SEPARATOR TANK
106		AIR-OIL SEPARATOR
107		MINIMUM PRESSURE VALVE
108		AFTER COOLER
109		SAFETY VALVE
110		THERMAL VALVE
111		OIL FILTER
112		OIL FILTER
113		MOISTURE SEPARATOR (AUTO DRAIN)
114		OIL DRAIN VALVE
115		BLOWDOWN VALVE (NO)
116		SOLENOID VALVE (NC)
117		SOLENOID VALVE (NC) OIL CIRCUIT

<p>ELGI ELGI EQUIPMENTS LTD., COIMBATORE - INDIA.</p>	
<p>DESCRIPTION : EG 30, EG 37, EG 45(USA)</p>	<p>REMARKS</p>
<p>MATERIAL : -</p>	<p>SL.No. DRAWING No. Rev.</p>
<p>WEIGHT : -</p>	<p>DRG.No. 015316650</p>
<p>TS 01 Temperature sensor</p>	<p>DRG.SHEET 3 OF 4 REVISION R 0 0</p>
<p>PS 01 Line pressure sensor</p>	<p>SCALE NTS</p>
<p>PS 02 Sump pressure sensor</p>	<p>APPROVED KJV DATE 07/02/18</p>
<p>PIPE SIZE</p>	<p>APPROVED KJV DATE 07/02/18</p>
<p>Air Line 1 1/4, 1 1/2 inch</p>	<p>APPROVED KJV DATE 07/02/18</p>
<p>Pulse Line 26mm</p>	<p>APPROVED KJV DATE 07/02/18</p>
<p>Oil Line Bypass 1/2 inch</p>	<p>APPROVED KJV DATE 07/02/18</p>
<p>Oil Line 1 inch</p>	<p>APPROVED KJV DATE 07/02/18</p>
<p>Air/Oil Line 2 inch</p>	<p>APPROVED KJV DATE 07/02/18</p>
<p>Envelope Line -</p>	<p>APPROVED KJV DATE 07/02/18</p>

Information contained in this document is CONFIDENTIAL and the property of ELGI EQUIPMENTS LIMITED. No part of this document should be reproduced or transmitted in any form or by any means, electronic, mechanical, photocopying, recording, or by any information storage and retrieval system, without the specific permission of the company.

Drp. No. 01282230

For UNSPECIFIED TOLERANCE Refer

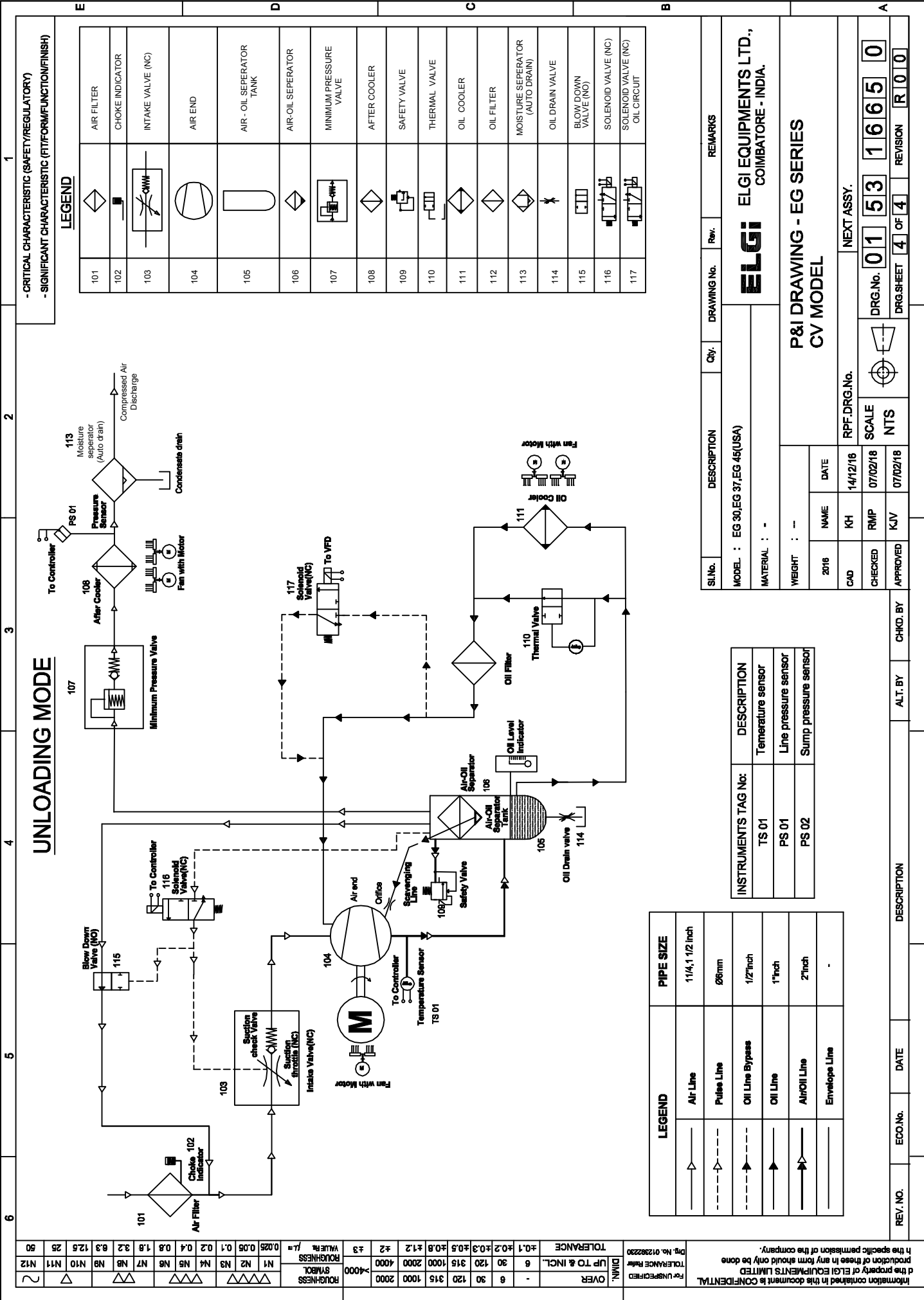
OVER	-	±0.1
DIM.	±0.2	±0.3
UP TO & INCL.	6	30
TOLERANCE	±0.2	±0.3
	±0.4	±0.5
	±0.6	±0.8
	±1.2	±1.5
	±2.0	±3.0
	±4.0	±6.0
	±0.05	±0.1
	±0.025	±0.05

ROUGHNESS

ROUGHNESS	2
SMOOL	N12
VALVE	N11
VALVE	N10
VALVE	N9
VALVE	N8
VALVE	N7
VALVE	N6
VALVE	N5
VALVE	N4
VALVE	N3
VALVE	N2
VALVE	N1

ROUGHNESS

ROUGHNESS	2
SMOOL	N12
VALVE	N11
VALVE	N10
VALVE	N9
VALVE	N8
VALVE	N7
VALVE	N6
VALVE	N5
VALVE	N4
VALVE	N3
VALVE	N2
VALVE	N1



UNLOADING MODE

- CRITICAL CHARACTERISTIC (SAFETY/REGULATORY)
- SIGNIFICANT CHARACTERISTIC (FIT/FORM/FUNCTION/FINISH)

LEGEND

101		AIR FILTER
102		CHOKE INDICATOR
103		INTAKE VALVE (NC)
104		AIR END
105		AIR - OIL SEPERATOR TANK
106		AIR-OIL SEPERATOR
107		MINIMUM PRESSURE VALVE
108		AFTER COOLER
109		SAFETY VALVE
110		THERMAL VALVE
111		OIL COOLER
112		OIL FILTER
113		MOISTURE SEPERATOR (AUTO DRAIN)
114		OIL DRAIN VALVE
115		BLOWDOWN VALVE (NO)
116		SOLENOID VALVE (NC)
117		SOLENOID VALVE (NC) OIL CIRCUIT

SL.No.	DESCRIPTION	Qty.	DRAWING No.	Rev.	REMARKS
MODEL : EG 30, EG 37, EG 45(USA)					
MATERIAL : -					
WEIGHT : -					
2016	NAME	NEXT ASSY.			
CAD	KH	14/12/16	RPF.DRG.No.		
CHECKED	RMP	07/02/18	SCALE	NTS	
APPROVED	KJV	07/02/18	DRG.No.	0153	16650
			DRG.SHEET	4	OF 4
			REVISION	R	000

INSTRUMENTS TAG No:	DESCRIPTION
TS 01	Temperature sensor
PS 01	Line pressure sensor
PS 02	Sump pressure sensor

LEGEND	PIPE SIZE
	1 1/4, 1 1/2 inch
	Ø6mm
	1/2" inch
	1" inch
	2" inch
	-

~	N12	ROUGHNESS	4000	ROUGHNESS	0.25
	N11	ROUGHNESS	4000	ROUGHNESS	0.05
	N10	ROUGHNESS	4000	ROUGHNESS	0.1
	N9	ROUGHNESS	4000	ROUGHNESS	0.2
	N8	ROUGHNESS	4000	ROUGHNESS	0.4
	N7	ROUGHNESS	4000	ROUGHNESS	0.8
	N6	ROUGHNESS	4000	ROUGHNESS	1.6
	N5	ROUGHNESS	4000	ROUGHNESS	3.2
	N4	ROUGHNESS	4000	ROUGHNESS	6.3
	N3	ROUGHNESS	4000	ROUGHNESS	12.5
	N2	ROUGHNESS	4000	ROUGHNESS	25
	N1	ROUGHNESS	4000	ROUGHNESS	50

Information contained in this document is CONFIDENTIAL and the property of ELGI EQUIPMENTS LIMITED. No part of these in any form should only be done in the specific permission of the company.
Dwg. No. 01282220 For UNRECORDED TOLERANCE Refer