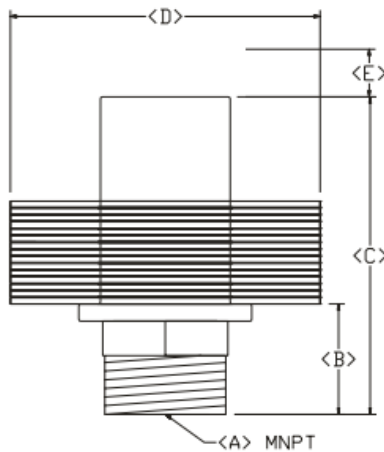
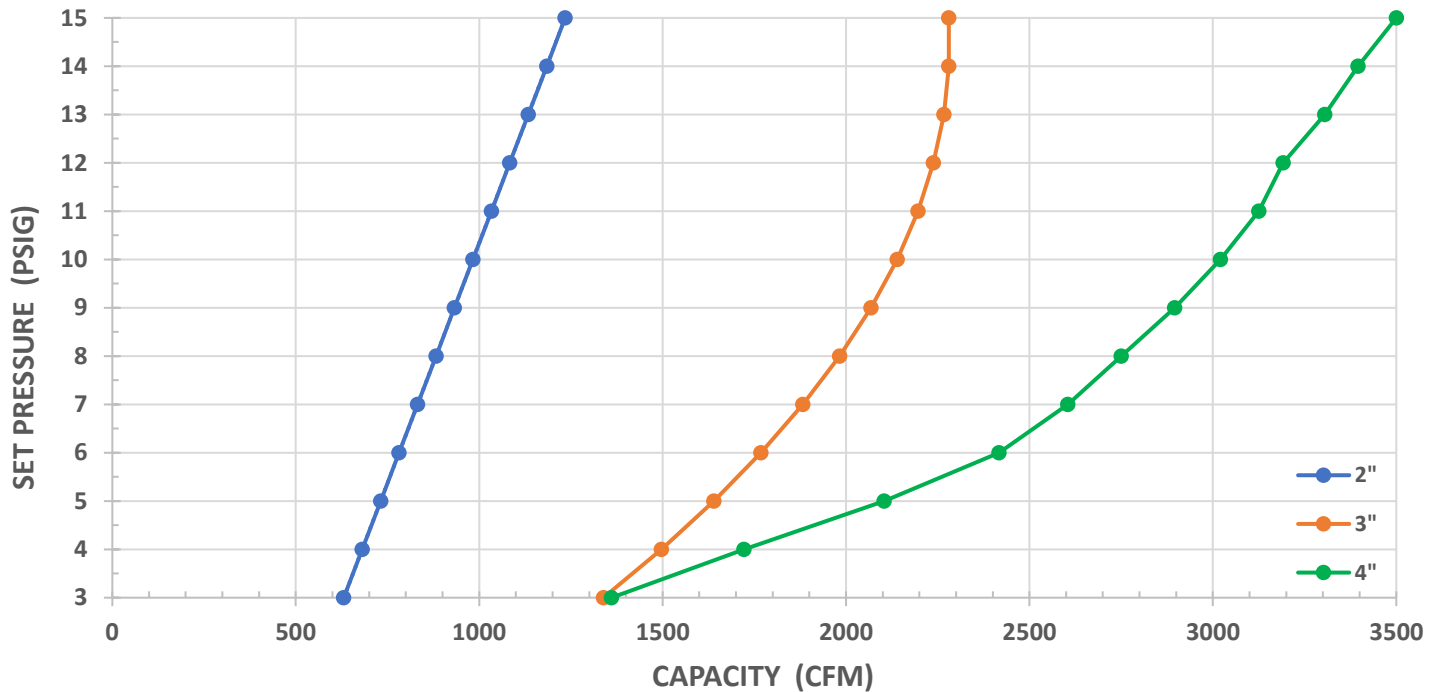


Tomlin TPWV High Volume Pressure Weighted Relief Valve

Tomlin TPWV weighted relief valves are designed for use in high flow, low pressure positive displacement blower applications. NPT connection sizes of 2", 3", and 4" are available supporting set point pressures of 1 PSIG to 15 PSIG and flows up to 3400 CFM.

Stackable 0.5 PSI weighted plates allow for simple adjustment to relief valve set pressure when added to or removed from the 1.0 PSI base valve body. Automatic reseating of the valves ensures that systems will resume normal operation once any imbalance events have been resolved.



Dimensions in Inches

	2"	3"	4"
A	2"	3"	4"
B	2.25	3.00	3.25
C	7.75	9.50	9.25
D*	6.00	9.00	16.50
E**	9.25	11.00	11.00

*0.5 PSIG Increment wgts diagonal dimension
 **Dimension when valve is fully open



INDUSTRIAL EQUIPMENT • MAJOR STOCKING DISTRIBUTOR
ENGINEERING • SALES • SERVICE • PARTS
 242 POPLAR STREET • P.O. BOX 8053 • TOLEDO, OH 43605 • (419) 691-3571 • FAX (419) 691-1928
 5091 WEST 164TH STREET • CLEVELAND, OHIO 44142 • (216) 265-0666 • FAX (216) 265-0667
 1-800-882-1992 (OHIO TOLL FREE) 1-855-691-0621 (MICHIGAN TOLL FREE)
www.tomlinequip.com